

CEEC Garbage Compactor Truck

User's Manual



HUBEI CEEC TRUCKS CO., LIMITED

<http://www.cectrucks.com/>

Preface

Thank you for purchasing CEEC TRUCKS products. For better using your DONGFENG garbage compactor truck, get the best operating performance, we strongly suggest that before the operation process you could read this manual instructions carefully, and to manipulate the program handily.

The manual detailed describes the performance of garbage compactor truck, structure, usage, precautions and maintenance of such knowledge. While showing details of the truck, both pictures and description will together help you get better understanding of how to use truck. Before the operation, the skilled operator should carefully read the contents of the manual.

After master the truck performance characteristics, methods of operation and precautions, then could start to operate this garbage truck. In order to ensure the staff turnover after the operation, and properly use of the truck. This manual book must be properly kept, shall not be lost and damage.

Whatsapp: +86 136 4729 9000
+86 159 7192 0800

---CEEC TRUCKS

Contents

Chapter 1, General Description.....	4
Chapter 2, Main Technical Data.....	5
Chapter 3, Garbage Compactor Truck Structure Components.....	6
Chapter 4, Garbage Compactor Truck Working Principles.....	12
i ,How are the Garbage Compactor trucks working?.....	12
ii ,What is the main component for truck?.....	12
iii, How to operate garbage compactor trucks? (Very Important).....	13
Chapter 5, Maintenance and Repair Instruction.....	23
Chapter 6, Troubleshooting.....	27

Whatsapp: +86 136 4729 9000
+86 159 7192 0800

Chapter 1. General Description

*CEEC TRUCKS Garbage Compactor Truck based on type II DONGFENG 4*2 Left Hand Drive chassis, Compactor body capacity could up to 6,000liters, which equipped with CAN Electric Control System and Hydraulic Joystick Control System, mainly used for garbage collection and transportation, and the working aerial can be city street, factory, community and other areas of need.*

The vehicle designed to fully rely on the advantages of the original of DONGFENG brand chassis, fully consider the product's convenience and reliability, also the chassis DONGFENG technology features. The garbage compactor body material is international standard high strength carbon steel, both internal and external with anti-rust painting, which can effective to avoid rusting. As for compactor body capacity is 6CBM and safety enough to collecting & transporting waste on customer requirement.

The DONGFENG 4x2 Garbage Compactor Truck equipped with new designed CAN control system, multi-function garbage compression system, side climbing ladder, Electric control boxes in cabin and rear of hopper, rear tilting device to collecting garbage from international standard 240L bins, two units waste water collection tank can efficiently prevent second pollution during transportation. Cab for the single-row Comfortable seat, nice driving feeling. Therefore, the vehicle is an ideal Fuel Tanker Truck mainly for oil transportation & refueling function.



(Preview for your DONGFENG 6CBM Garbage Compactor Truck)

Chapter 2, Main Technical Data

Basic parameter:

Items		6CBM DONGFENG Garbage Compactor Truck
S I Z E	Outer Dimension (L×W×H) (mm)	6400*2000*2350
	Wheelbase (mm)	3300
Kerb Weight (kg)		4350
G E A R	Gearbox brand	DONGFENG
	Model	5-shift gearbox
	Type	Manual
Cab capacity (includes driver)		2+1
E N G I N	Brand	CHAOCHAI
	Model	CY4102-C3F
	Type	Four cylinder inline, four stroke, water-cool, turbocharged Inter-cooling, diesel
	Rating Power (kW/HP)	70 / 95

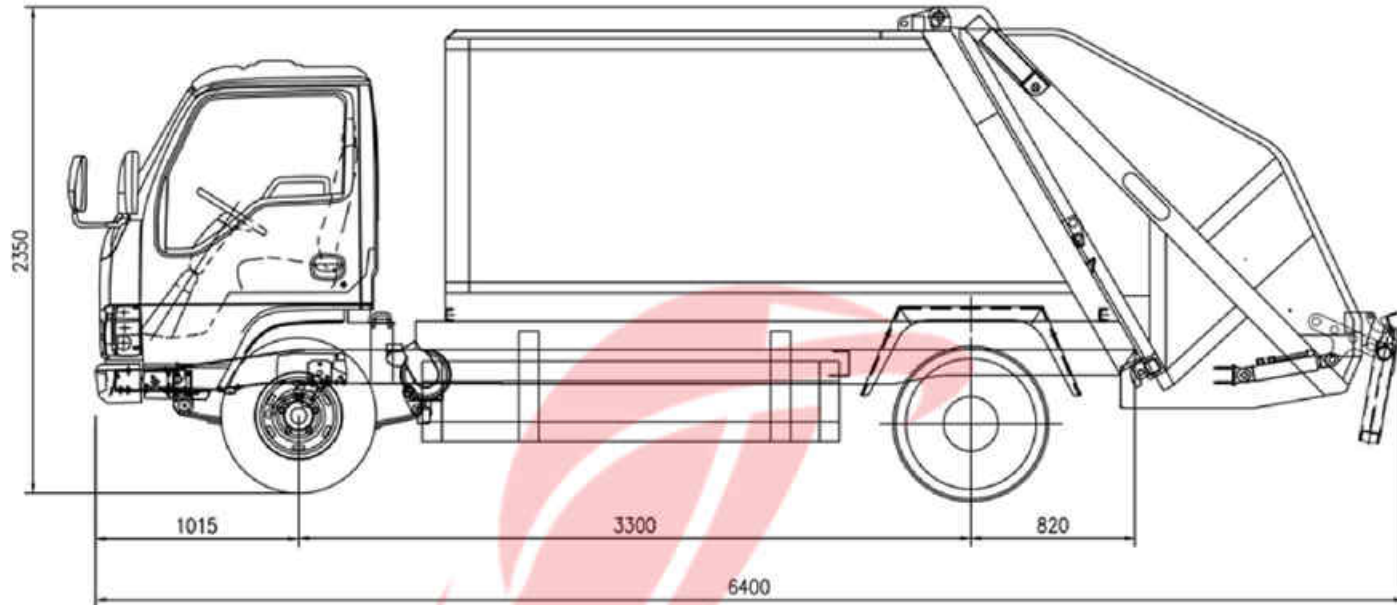
Note: 1. We keeps the right to revise the parameters on the list above.

Garbage Body basic parameter list

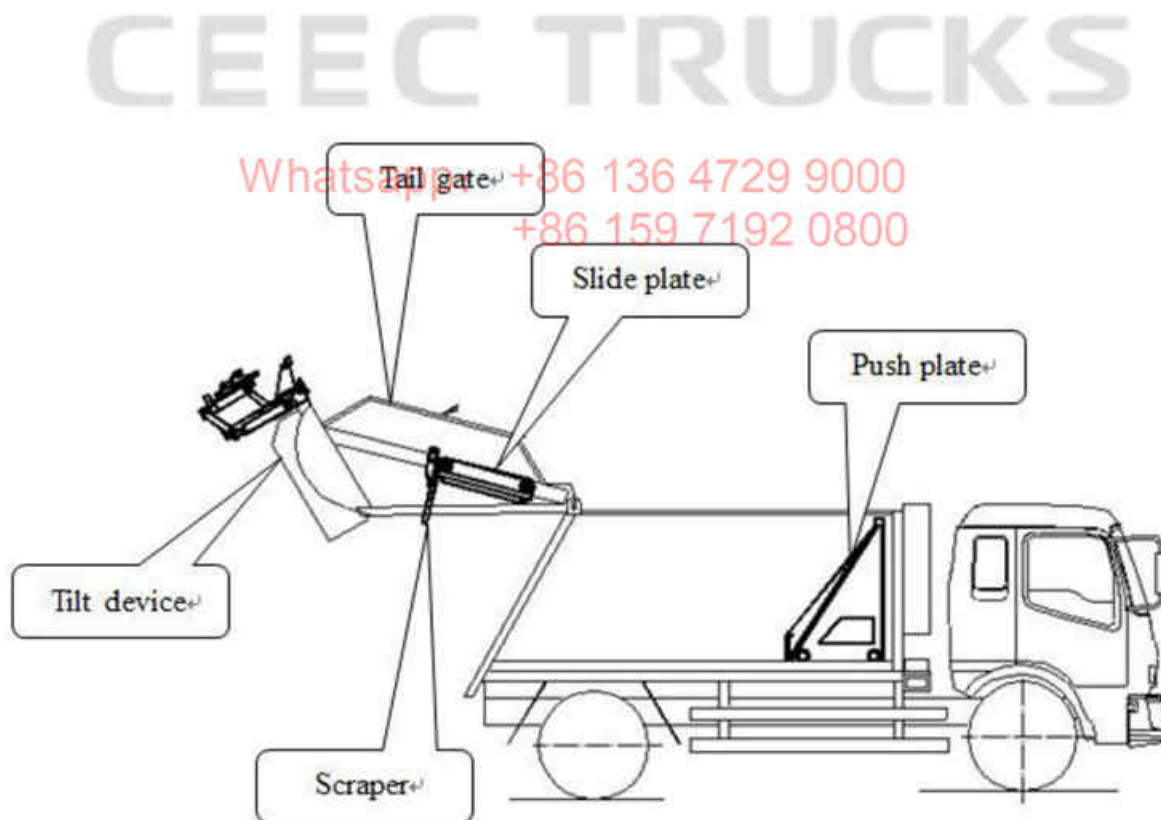
Items		Parameter	
Garbage Body	Capacity (CBM)	6	
	Material	Standard Carbon Steel	
	Painting	Internal	With anti-rust painting
		External	Gray painting as required
	Control System	Electric Control	Control Box in Cabin
		Hydraulic Control	Control Box two sides of hopper
	PLC	Behind of cabin at driver side	
	Hydraulic Cylinder quantity	PLC	New designed CAN System
		Hopper	2
		Slide Plate	2
Scraper		2	
Tilting device		2	
Push Plate	1		

Chapter 3, Garbage Compactor Truck Structure Components

Overview for DONGFENG 6CBM garbage compactor truck technical drawing:



Above drawing show that there are safety-guards at two sides; at rear of tank is hopper for garbage collection; in front of the tank equipped climbing ladder. Below figure help you better understanding the structure of the garbage truck:



Front View: Hydraulic control system



Electric Control Box (In cabin)

Electric Control Box (In tailgate)

Hydraulic Control Joysticks (At drive side)

Each button has three indicators, means as below:
First Indicator: Orange → Waiting for work
Second Indicator: Green → Working ON
Third Indicator: Red → Emergency and need to check system



Electric Control Box (In cabin)



Electric Control Box
(In tailgate)



Emergency stop Button
(In tailgate)

Hydraulic Control Joysticks
(At drive side)



Front View: garbage collection system and waste water collecting bins



Garbage collection system

Waste water collecting bins



Tail Gate Assembly

Whatsapp: +86 136 4729 9000
+86 159 7192 0800

Slide Plate Assembly





Scraper Assembly



Push Plate Assembly

CEEC TRUCKS

Whatsapp: +86 136 4729 9000
+86 159 7192 0800



Tilting Device Assembly
(Tilting double 240L
garbage bin same time)



Arrow light system and control box



Top rotation light system and control button

Whatsapp: +86 136 4729 9000
+86 159 7192 0800

PTO switch button



Chapter 4, Garbage Compactor Truck Working Principles

The operator should fully understand Whole Structure and Working Principle for DONGFENG Garbage Compactor Truck before any operation. Only trained person can operate this vehicle properly and to prevent unnecessary accidents and equipment damage.

i ,How are the Garbage Compactor trucks working?

The DONGFENG Garbage Compactor Truck makes use of the special power take off (PTO) to get power from the engine, and then transfer the power to the Gear Pump via drive axle so to rotate the pump. The pump start working to transfer hydraulic oil to cylinders through pipelines, and cylinders working to make all garbage trucks equipment working, including tailgate, push plate, slide plate, scraper and tilting device. And then realize all function of the garbage compactor truck.

ii ,What is the main component for truck?

The garbage compactor truck is refitted based on the DONGFENG 4x2 LHD chassis. The refit part includes garbage collection assembly, actuator device and operation system.

- *Garbage collection assembly: Carbon steel material tanker body for garbage storage, with tailgate, tilting device, slide plate, scraper and push plate to realize garbage loading and unloading working.*
- *Actuator device: includes power take off, drive line, etc., which can pass the power from the chassis to the gear pump.*
- *Operation system: including CAN Electric control system (Main control box in cabin & Rear control box at side of tailgate) and Hydraulic Joystick control system, this helps come to all special functions' convert.*

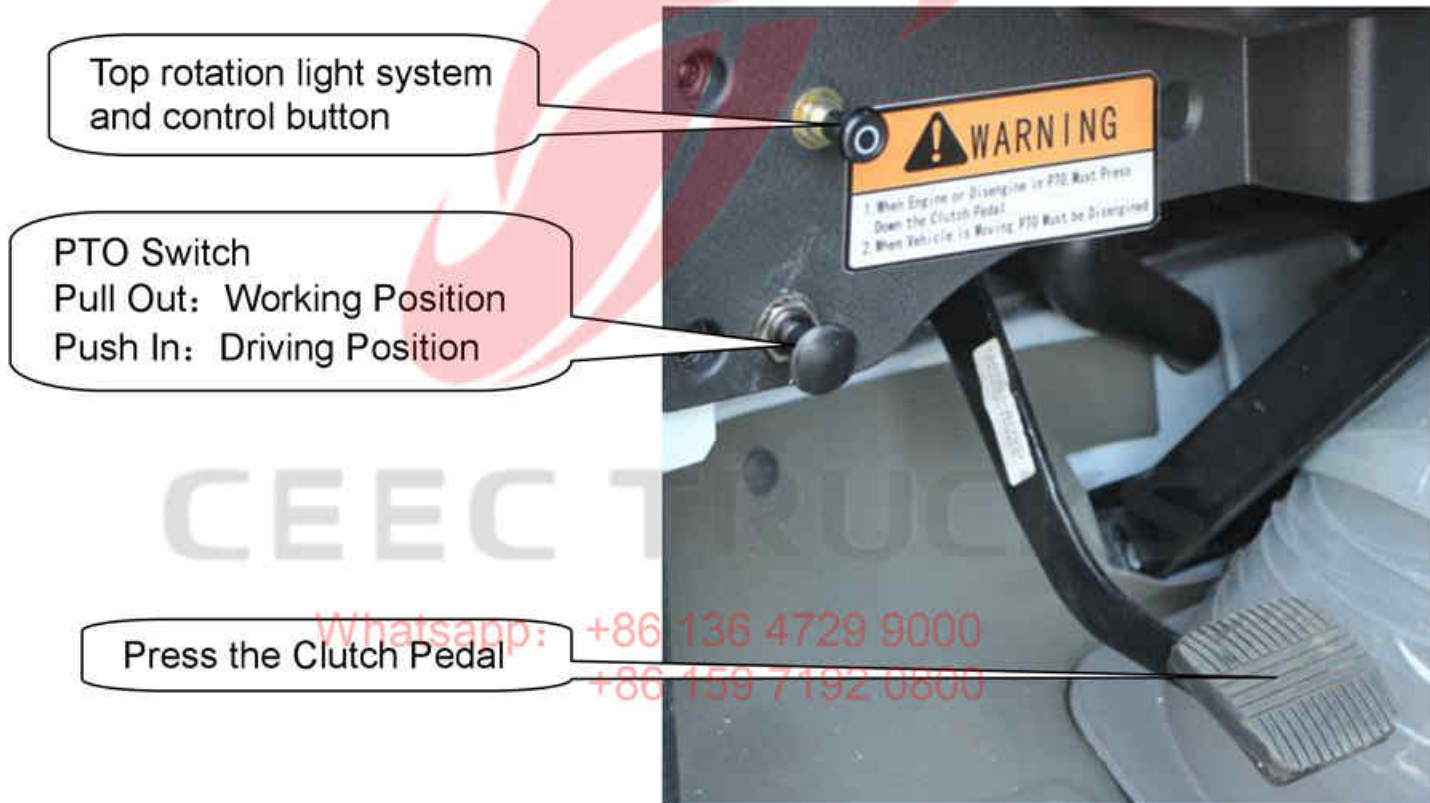
iii, How to operate garbage compactor trucks? **(Very Important)**

1.1 Ready to work

(If idle for a long time, please keep the truck engine run for a few minutes. Also, should ensure fuel tank and water tank are enough.)

➤ **Step 1**

Thoroughly check the compactor truck to make sure working environment is good. Then start the truck engine. Press the Clutch Pedal, meanwhile press the PTO (Power Take Off) to Working Position.

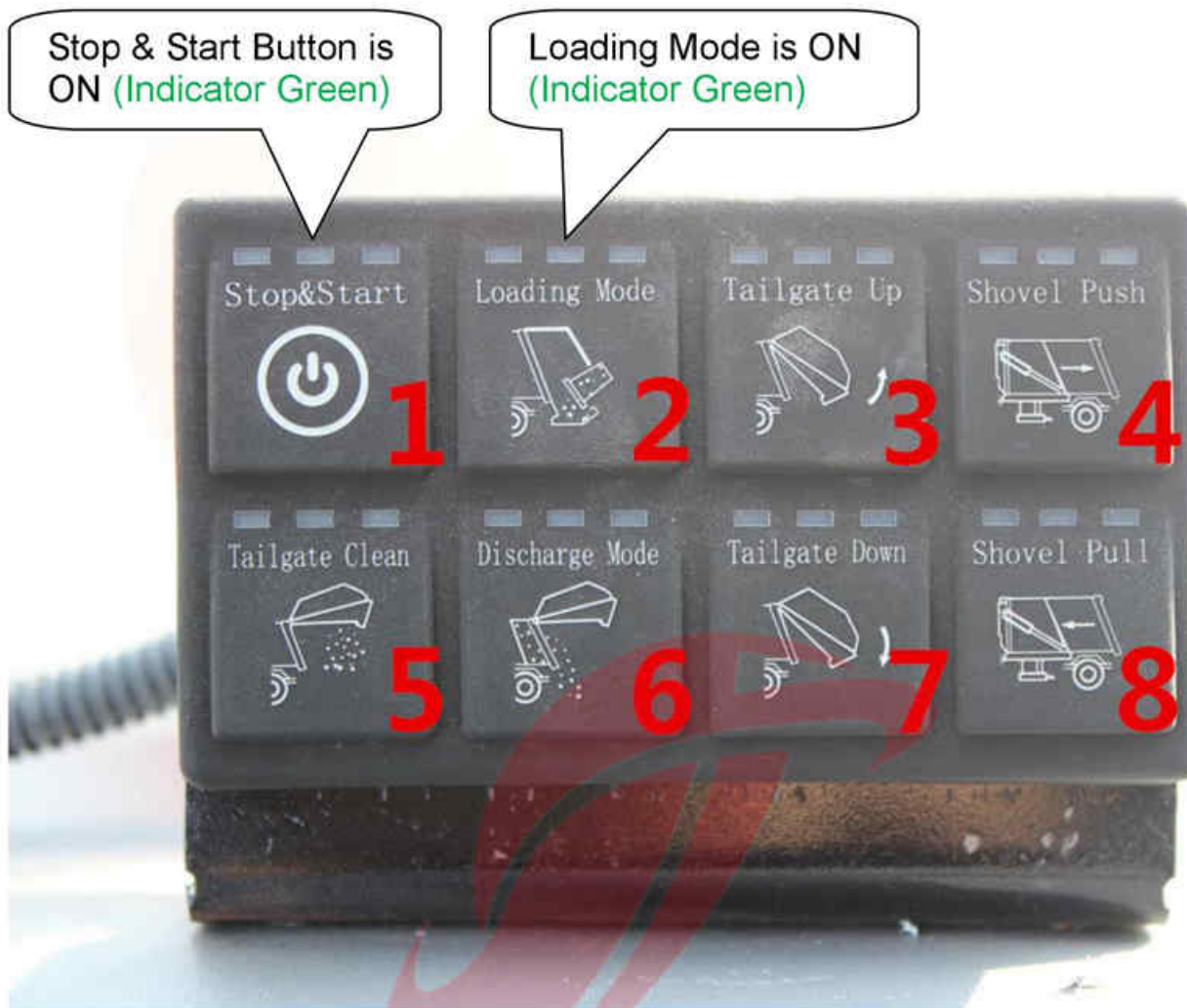


Please Note: Please keep the PTO at Driving Position while driving the truck!
Please does not operating the garbage compactor system while driving the truck!

➤ **Step 2**

Make sure the working environment is safe. Press the Stop & Start Button 5-6 Seconds to start the electric system, the indicator is green means power ON. Then turn on the button to Loading

NOTE: No staying under Tail Gate



Switch 1: **Stop & Start** (Whole truck electric box working)

Switch 2: **Loading Mode** (Truck for loading process)

Switch 3: **Tailgate Up** (Control Tailgate rising up)

Switch 4: **Shovel (Push Plate) Push** (Push Plate move out to discharge garbage)

Switch 5: **Tailgate Clean** (Open waste water tank cover for water discharging)

Switch 6: **Discharging Mode** (Truck for discharging process)

Switch 7: **Tailgate Down** (Control Tailgate falling down)

Switch 8: **Shovel (Push Plate) Pull** (Push Plate move in and ready for next process)

➤ **Step 3**

Rear Control Box operates instruction.

Kindly refer to below picture to be familiar with the box panel

Automatic operating system & Manual operating system available to you!

The CAN system default is AUTO Mode



Button 1
AUTO Mode: press once, single cycle

Button 2
AUTO Mode: press once, continue cycle

Button 3
MANUAL Mode: press to make scraper open

Button 4
MANUAL Mode: press to make slide plate upward

Button 5
Work Light: for night work

Button 6
MANUAL: press once, change to MANUAL Mode

Button 7
MANUAL Mode: press to make scraper close

Button 8
MANUAL Mode: press to make slide plate down

Button 9
LEFT: tilt device **Down**
RIGHT: tilt device **Up**

Button 10
Emergency STOP: press once, stop any process once



Main STOP Button
PUSH IN: stop all process, Button 1~10 not working
PULL OUT: all button 1~10 working

Automatic operating system

(Default Mode)

Step 3.1.1

Button 9 turn to DOWN, the **tilt device** down, collecting the garbage from 240L bins (2 units 240L garbage bins can be used at same time);

Then turn to UP, the **tilt device** up, the garbage down to the **Tail Gate** stuffer.

Turn to DOWN again to make tilt device reposition before the scraper working.

(How does this model garbage compactor truck tilting device working?)



Tilt Device DOWN

Tile Device UP

Whatsapp: +86 136 4729 9000
+86 159 7192 0800

Step 3.1.2

Press once the Button 1, compression single cycle (**little garbage at Stuffer**)

Press once the Button 2, compression continue cycle (**much garbage at Stuffer**)

Step 3.1.3

Press once the Button 10, when continue cycle compression finished.

NOTE: Press the Button 10 or Main STOP Button when there is an emergency!

Step 3.1.4

Make the **tilt device** STOP, the truck is ready for next compression work.

Manual operating system

Press once Button 6 turn to MANUAL Mode

Step 3.2.1

Button 9 turn to DOWN, the **tilt device** down, collecting the garbage from 240L bins (2 units 240L garbage bins can be used at same time);

Then turn to UP, the **tilt device** up, the garbage down to the **Tail Gate** stuffer.

Turn to DOWN again make tilt device reposition before the scraper working.

Step 3.2.2

Press the Button 3 to make **Scraper** open

Press the Button 8 to make **slide plate** down.



Step 3.2.3

Press the Button 7 to make the **scraper** closed to collect garbage.

Step 3.2.4

Press the Button 4 to make the **slide plate** upward.

Step 3.2.5

Press the Button 3 to make the **scraper** open again.

Step 3.2.6

Operate once again to collect and compress more garbage.

(**NOTE:** **tilt device** should be **Stop** every time before the scraper working)

➤ Step 4

NOTE: Only suggest to use MANUAL JOYSTICK when maintenance or emergency!

(Operation Joysticks with English version plate for operating guidance)

Control the manual joystick to work.

- Joystick1: Shovel
Control the Push Plate **Out & In**
- Joystick2: Sliding Plate
Control the slide plate **Down & Up**
- Joystick3: Scraper
Control the scraper **Off & On**
- Joystick4: Lifting
Control the tail gate **Up & Down**
- Joystick5: Rolling Over
Control the Tilting Device **Rise & Down**



Whatsapp: +86 136 4729 9000
+86 159 7192 0800



Pressure Gauge

Tilting Device Accelerate Button:
PULL OUT: Tilting device working fast
PUSH IN: Tilting device working normal

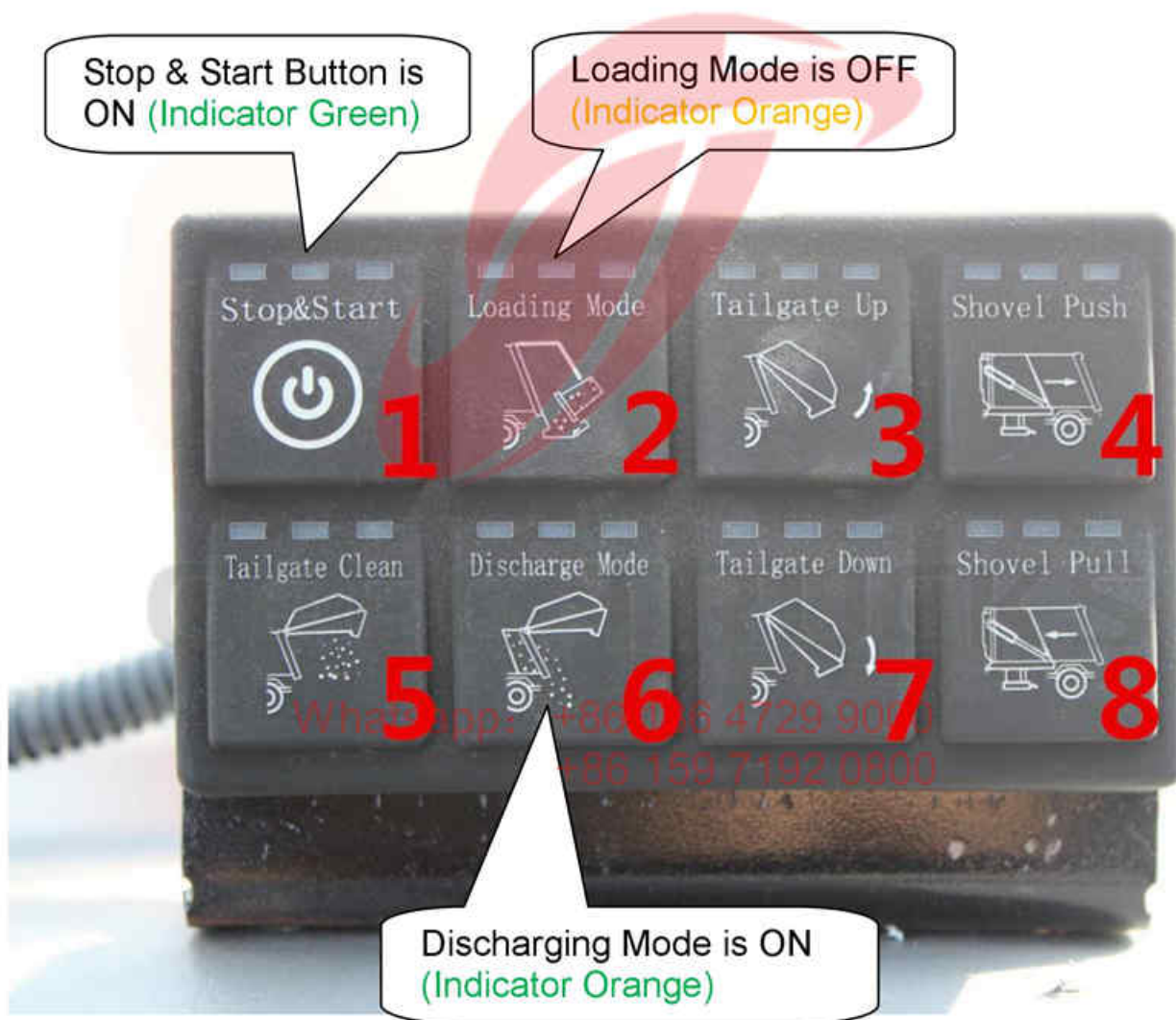
1.2 Dumping the garbage

➤ Step 1

Make sure **no staying under the Tail gate**
(Please be sure for every compression work)

➤ Step 2

Turn the main control to Unload



➤ Step 3

Press Button 3 or Control Joystick 4 to make the **tail gate up**.



Press Button 3 or Control Joystick 4 to make the **tail gate** up.

Press Button 4 or Control Joystick 1 to make the **push plate** move out.

➤ **Step 4**

Press Button 4 or Control Joystick 1 to make the **push plate** move out.

➤ **Step 5**

Wait until all garbage discharged

➤ **Step 6**

Press Button 8 or Control Joystick 1 to make the **push plate** move in until reposition.

➤ **Step 7**

Press Button 7 or Control Joystick 4 to make the **tail gate** down. Please reposition all when **tail gate** down completely.

➤ **Step 8**

Drain out all the waste water produced by compressing work. (Press Button 5 if necessary)



Waste Water Vents
(Below the Tailgate)



Waste Water collection tank



Clean Water tank (Behind cabin),
Mainly for hands washing after
working

Whatsapp: +86 136 4729 9000
+86 159 7192 0800

1.3 Cleaning the body

The engine must **flameout** when arrive at cleaning field.

➤ **Step 1**

Clean vehicle exterior.

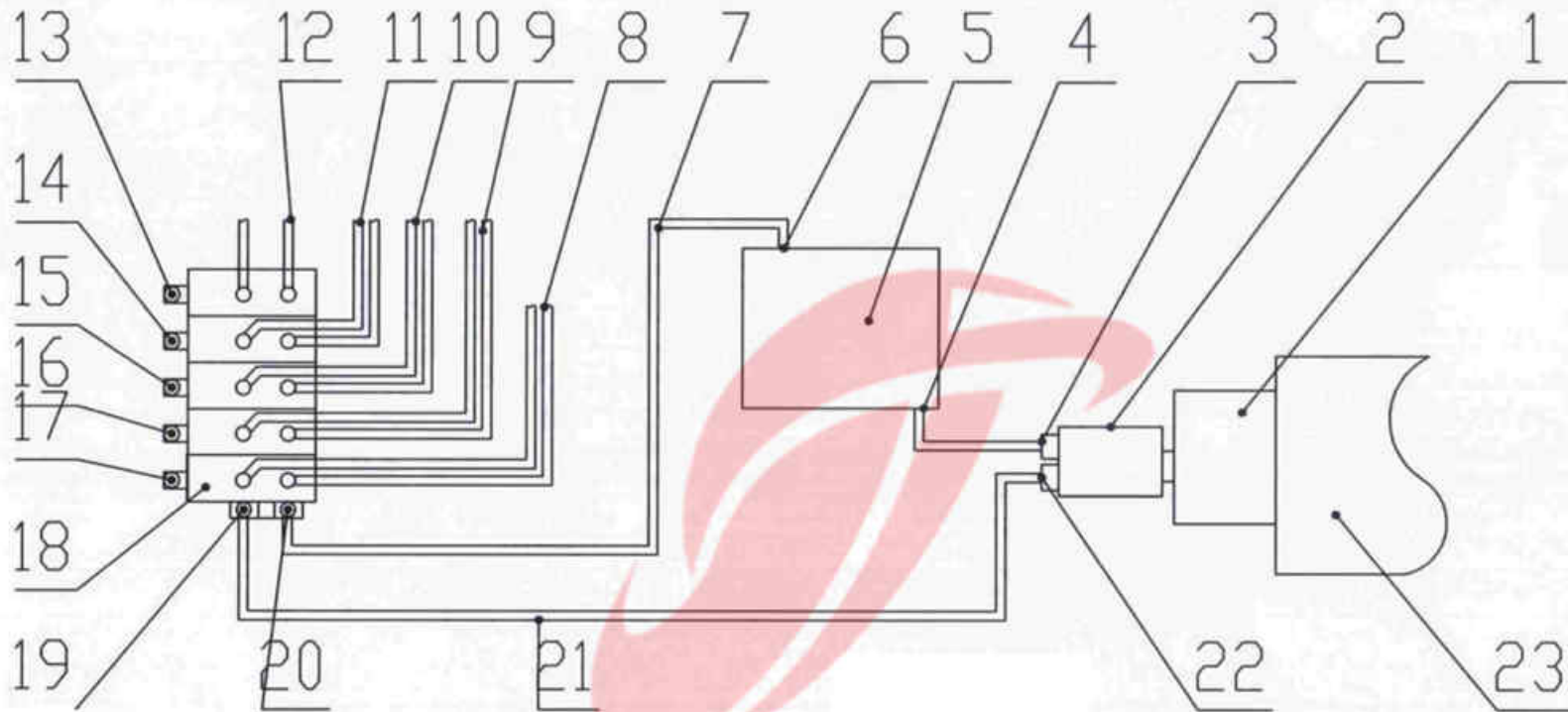
Press Button 3 or Control Joystick 4 to make the **tail gate up**. Then cleaning the inside body.

Clean the **tail gate device** internal.

➤ **Step 2**

Add some lubrication on spindle to keep compactor work safety and smooth.

Garbage Compactor Truck Hydraulic Drawing:



- | | | | | |
|----------------------------------|-----------------------------|---------------------------|-----------------------------------|--------------------|
| 1、PTO | 8、Push Plate Oil Cylinder | 13、Joystick 5 for Item 12 | 18、Multi-way Valve | 23、Chassis Gearbox |
| 2、Oil Pump | 9、Slide Plate Oil Cylinder | 14、Joystick 4 for Item 11 | 19、Oil Inlet for Multi-way Valve | |
| 3、Inlet Pipe for Oil Pump | 10、Scraper Oil Cylinder | 15、Joystick 3 for Item 10 | 20、Oil Outlet for Multi-way Valve | |
| 4、Outlet pipe for Oil Tank | 11、Tail Gate Oil Cylinder | 16、Joystick 2 for Item 9 | 21、Oil Pipeline | |
| 5、Hydraulic Oil Tank | 12、Tilt Device Oil Cylinder | 17、Joystick 1 for Item 8 | 22、Oil Inlet for Oil Pump | |
| 6、Inlet Pipe for Multi-way Valve | | | | |
| 7、Oil Pipeline | | | | |

Hydraulic Oil change suggestion: **YWZ-80T hydraulic oil or standard hydraulic oil**

For First Time: After 150-hour working, please change the hydraulic oil;

For Second Time: After half year working, please change the hydraulic oil;

Form Third Time: After every year working, please remember to change the hydraulic oil.

Chapter 5, Maintenance and Repair Instruction

Maintenance and Repair Instructions

The routine maintenance requirements and procedures for each subsystem of the compactor are described.

Every day

1、 Before maintenance work, the following things should be done firstly:

- a、 Turn off the PTO(power take-off) and speed-up switch, turn the manual joysticks to middle level.
- b、 Flameout the engine, take the key and put it into your pocket or other place to make sure it's safe.
- c、 Use the parking brake.
- d、 Put a sign wrote "under maintenance, please do not start" on the steering wheel.
- e、 Put chock under the wheels to make truck stability.

2、 Cleaning vehicle exterior, the inside and outside of the tilt device, the oil tank and pipe, all these daily working has purpose to prevent rust and to keep compactor ready for work anytime.

Whatsapp: +86 136 4729 9000
+86 159 7192 0800

3、 Carefully examine the hydraulic system, including whether hydraulic oil at normal level, whether the hydraulic pipeline leak oil or not, which can protect the compactor truck and always keep the compactor ready to work anytime.

4、 Carefully check whether the electric system work normal or not, including the tail lights, the work indicating lamp etc.

5、 Carefully clean the compress lock at the rear of the truck. To keep compression work efficiently.

6、 Carefully check the entire compactor to inspect whether any warning signs and operating instruction sign fell off. Catch up on them when necessary.

7、Lubricate the whole pathway of the compressed garbage truck every day.

8、Carefully clean the **push plate** and surrounding of the oil tank.

Every week

1、Carefully inject butter or other lubrication to the spindles of the compactor, places are as below pictures:

- a、Lubricate the spindles of the tail gate
- b、Lubricate the cover of pivots of the scraper
- c、Lubricate the oil cylinder bearing of the scraper
- d、Lubricate the pathway of the slide plate
- e、Lubricate the all the connecting rod
- f、Lubricate the chassis by following the maintenance manual



2、Carefully exam the compactor to check out whether any connection place need to fasten again.

Every month

1、Carefully exam all the pipes, find out whether there is any leakage. If there are, please exchange

it immediately.

2. Carefully exam the compression cylinder and the scraper oil cylinder piston rod, find out whether they are all working normally.
3. Carefully exam the push plate oil cylinder, find out whether it work normally.
4. Carefully lubricate axles of the push plate to make it work smoothly and efficiently.
5. Carefully lubricate the sideways of the push plate to make it work normally.

Every 6 month

1. Carefully cleaning the air filter.
2. Carefully cleaning the oil suction filter.
3. Carefully replace the oil filter cartridge
4. Carefully exam the entire body of the truck to find out if anything need improved. Such as any place rusting; is the framework still work normally etc.

Whatsapp: +86 136 4729 9000
+86 159 7192 0800

Every 2 Year

1. Cycle maintenance as mentioned above.
2. Carefully clean fuel tank, replace the hydraulic oil.

Maintenance of the hydraulic system

1、 Hydraulic oil tank

- a、 Fine filter of oil return pipe: First exchange happened after 50 hours use, then every 250hours. When there is something wrong with the main parts of the hydraulic system also should change it.
- b、 Respirator: Keep the respirator clean, non-stop and correctly installed to make the air can goes inside the oil tank freely. Exchange the respirator every 6 month. (the exchange time should be short when working at dirty environment for a long time.)
- c、 Hydraulic oil: First exchange happened after 150 hours use,
Second exchange happened after 6 month use,
Then every 12 months use.

NOTE: YWZ-80T hydraulic oil or standard hydraulic oil;

- d、 Oil outlet strainer: Should be cleaned every time exchange the oil. Replace it when necessary.

2、 Oil cylinder

- a、 Carefully exam the oil cylinder to find out whether there is leakage and noise or not every week.
Whatsapp: +86 136 4729 9000
+86 159 7192 0800
- b、 Carefully check the oil tank, repair when there are scar on piston rod, repair all the scars in time to avoid any danger.

Chapter 6, Troubleshooting

Failure	Cause	Solution
Oil leakage happened on oil cylinder piston rod	<ol style="list-style-type: none"> 1、 The damage of the sealing ring 2、 There are scars on the surface of the piston rod 	<ol style="list-style-type: none"> 1、 Carefully exam the guide sleeve and replace the sealing ring 2、 Replace the parts.
Piston rod move slowly	<ol style="list-style-type: none"> 1、 Some air mixed in the hydraulic cylinder or in the hydraulic oil 2、 There are no hydraulic oil in the tank or oil level is too low to work normally. 3、 Viscosity of hydraulic oil failing standard 4、 Stoppage of the oil inlet/outlet strainer 5、 Stoppage or limiting of the hydraulic oil in system 6、 Leakage of the oil suction pipe 7、 Abrasion of the oil pump 8、 Abrasion of some parts 9、 Adjustment of the parts are not proper. 10、 Pressure valve is too dirty 11、 Overload of the system work 	<ol style="list-style-type: none"> 1、 Eliminate all the air 2、 Inject some hydraulic oil and carefully check the system. 3、 Replace hydraulic oil to recommended ones. 4、 Carefully clean or replace it, and find out the polluted reason 5、 Carefully check the oil pipes and clean them. 6、 Repair or replace it 7、 Repair or replace it 8、 Carefully check the pump, valve and oil cylinder, find the abrasion part and repair or replace it. 9、 Refer to the technical manual to adjust properly 10、 Carefully clean it 11、 Refer to the technical manual to load properly. 12、 Reconnect the oil pipe properly

	<p>12、 Improper oil pipe connection</p> <p>13、 Oil pump not work</p> <p>14、 The hydraulic oil temperature is too low</p> <p>15、 The engine's revolving speed is not enough</p>	<p>13、 Carefully check the PTO</p> <p>14、 The viscosity is too high and should be adjust oil temperature to working level</p> <p>15、 Adjust to proper level</p>
Hydraulic cylinder pushing is powerless	<p>1、 Damage of the piston sealing</p> <p>2、 System pressures is too low (the overflow valve became imbalance)</p> <p>3、 Damage of the oil pump, System pressures is too low</p> <p>4、 Shortage of the hydraulic oil</p> <p>5、 Stoppage of the oil filter</p>	<p>1、 Carefully exam and replace the sealing element</p> <p>2、 Carefully exam and adjust the pressure of the overflow valve</p> <p>3、 Carefully exam and replace the oil pump</p> <p>4、 Carefully exam and fulfill the hydraulic oil</p> <p>5、 Carefully exam and replace the filter element</p>
Leakage of the oil pump	<p>1、 Damage of the sealing filter</p> <p>2、 The oil pipes are not sealed as required</p>	<p>1、 Carefully exam and replace the sealing ring</p> <p>2.1、 Carefully exam, tighten the joint</p> <p>2.2、 Replace the joint or add some sealant to seal the joint</p>

<p>Blister exist in the hydraulic oil</p>	<ol style="list-style-type: none"> 1、 Oil level in the tank is too low 2、 There is water in the hydraulic oil 3、 Leakage of the pipe between the oil tank and the pump 4、 Hydraulic hose is kinked or squished, and limit the flow of the oil 5、 Have not choose the right hydraulic oil 6、 Abrasion of the sealing parts in oil pump axle 	<ol style="list-style-type: none"> 1、 Adjust the oil to required level. Carefully exam the leakage of the system. 2、 Exchange new hydraulic oil 3、 Fasten the joint or exchange suction pipe 4、 Replace the oil pipe 5、 Exchange to the recommend oil 6、 Carefully clean or replace it.
<p>Oil pump is too noise while working</p>	<ol style="list-style-type: none"> 1、 The hydraulic oil viscosity is too high 2、 Speed of the oil pump is too high 3、 Suction pipe is blocked or extrusion 4、 The oil tank's respirator is blocked 5、 Primary oil filter is blocked 6、 Parts sticking to each other 7、 There are air in the hydraulic oil 8、 Hydraulic oil level is too low 9、 Parts of the oil pump is abrasion 	<ol style="list-style-type: none"> 1、 Change low viscosity oil 2、 Adjust the oil pump's speed to required level. 3、 Cleaning or exchange the suction pipe 4、 Open the respirator , Carefully wash to clean it. 5、 Cleaning the filter screen 6、 Carefully repair the sticking parts, cleaning all of them, and replace when necessary 7、 Carefully check the system, replace the suction pipe and sealing parts. 8、 Adjust to proper level 9、 Repair the oil pump and find out the reason

Leakage of oil cylinder	<ol style="list-style-type: none"> 1、 Damage of the cylinder 2、 Damage of the parts of piston valve 3、 Parts of the oil cylinder is loose 4、 Damage of the piston rod 	<ol style="list-style-type: none"> 1、 Replace the cylinder and find out why it damaged 2、 repair or replace the piston valve, find out the reason 3、 Fasten the parts until no leakage 4、 Carefully exam, exchange it when necessary
Hydraulic oil temperature is too high	<ol style="list-style-type: none"> 1、 Use the control valve for a long time 2、 Hydraulic oil is not proper 3、 The revolving speed is high 4、 The inside leakage 	<ol style="list-style-type: none"> 1、 The manual joystick should reposition when not use 2、 Exchange to proper oil 3、 Adjust to proper level 4、 Carefully check the pump, valve and oil cylinder to find out reason, then repair it.

CEEC TRUCKS

Whatsapp: +86 136 4729 9000
+86 159 7192 0800